



TORTUGA BAY

BEACHFRONT LIVING



TORTUGABAY.COM

A boutique collection of beachfront residences located in the beating heart of vibrant San Jose del Cabo. An exceptional opportunity and beachfront-lifestyle investment.

Two and Three Bedrooms
& Penthouses available.





HI, I'M MIKE SCHAIBLE

Owner, and Developer of Tortuga Bay

Construction has begun at the much-anticipated Tortuga Bay Phase-II, offering spacious and luxurious two- and three-bedroom condominiums, right on the beach.

Tortuga Bay is ideally located on the famous, Zona Hotelera, full of shops and restaurants all within walking distance.

On-site, we owners and our guests enjoy a full array of amenities specifically designed for private beach front living and including our multiple cascading swimming pools and spas, garden level BBQ areas, fully equipped fitness center, lighted pickle ball courts, tropical gardens and so much more.

I have been developing here in Los Cabos for over three decades. I only build and deliver high-quality, then back it up with my guarantee. And I am also a Tortuga Bay resident. It's a wonderful place to live.

Now is the perfect time and opportunity to own and enjoy a place at the beach. Tortuga Bay represents a last chance for beachfront ownership in Los Cabos. Pre-sales are very active, offering the best pricing and inventory availabilities.

Take the next step and join us.

WELCOME!

PRICE LIST

BUILDING B

ROOFTOP PENTHOUSE 3611 SOLD	ROOFTOP PENTHOUSE 3612 \$2,450,000		ROOFTOP PENTHOUSE 3613 \$2,450,000		ROOFTOP PENTHOUSE 3614 SOLD	PENTHOUSE 3717 SOLD	
	3615 SOLD		3616 SOLD		3617 SOLD		
3511 \$1,750,000	3512 \$1,050,000	3513 \$1,050,000	3514 \$1,050,000	3515 \$1,070,000	3516 \$1,090,000	3517 SOLD	
3411 \$1,650,000	3412 \$1,030,000	3413 \$1,030,000	3414 \$1,030,000	3415 \$1,050,000	3416 \$1,070,000	3417 SOLD	
3311 SOLD	3312 \$1,010,000	3313 \$1,010,000	3314 \$1,010,000	3315 \$1,030,000	3316 SOLD	3317 SOLD	
3211 \$920,000	3212 \$990,000	3213 \$990,000	3214 \$990,000	3215 SOLD	3216 SOLD	3217 SOLD	
3111 \$900,000	3112 SOLD	3113 SOLD	3114 \$1,200,000	3115 \$1,250,000	3116 \$1,300,000	3117 SOLD	

PRICES ARE IN U.S. DOLLARS AND ARE SUBJECT TO CHANGE WITHOUT NOTICE

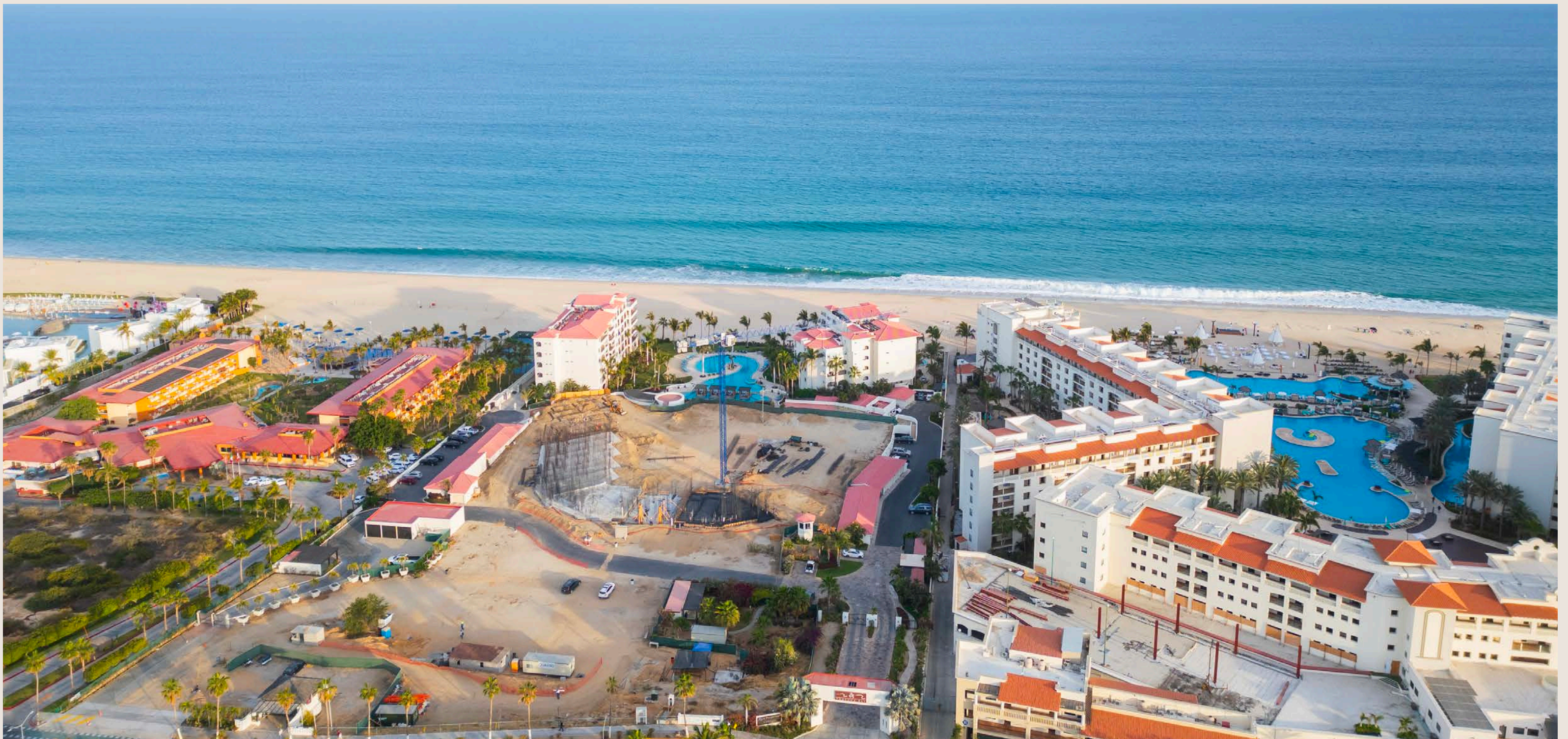
PRICE LIST BUILDING C

ROOFTOP		
PENTHOUSE 3300 SOLD		
<div>B</div> <div>3208 \$1,750,000</div>	<div>G</div> <div>3209 \$1,750,000</div>	<div>B</div> <div>3210 \$1,750,000</div>
<div>B</div> <div>3108 SOLD WITH POOL</div>		<div>B</div> <div>3110 \$1,850,000 WITH POOL</div>

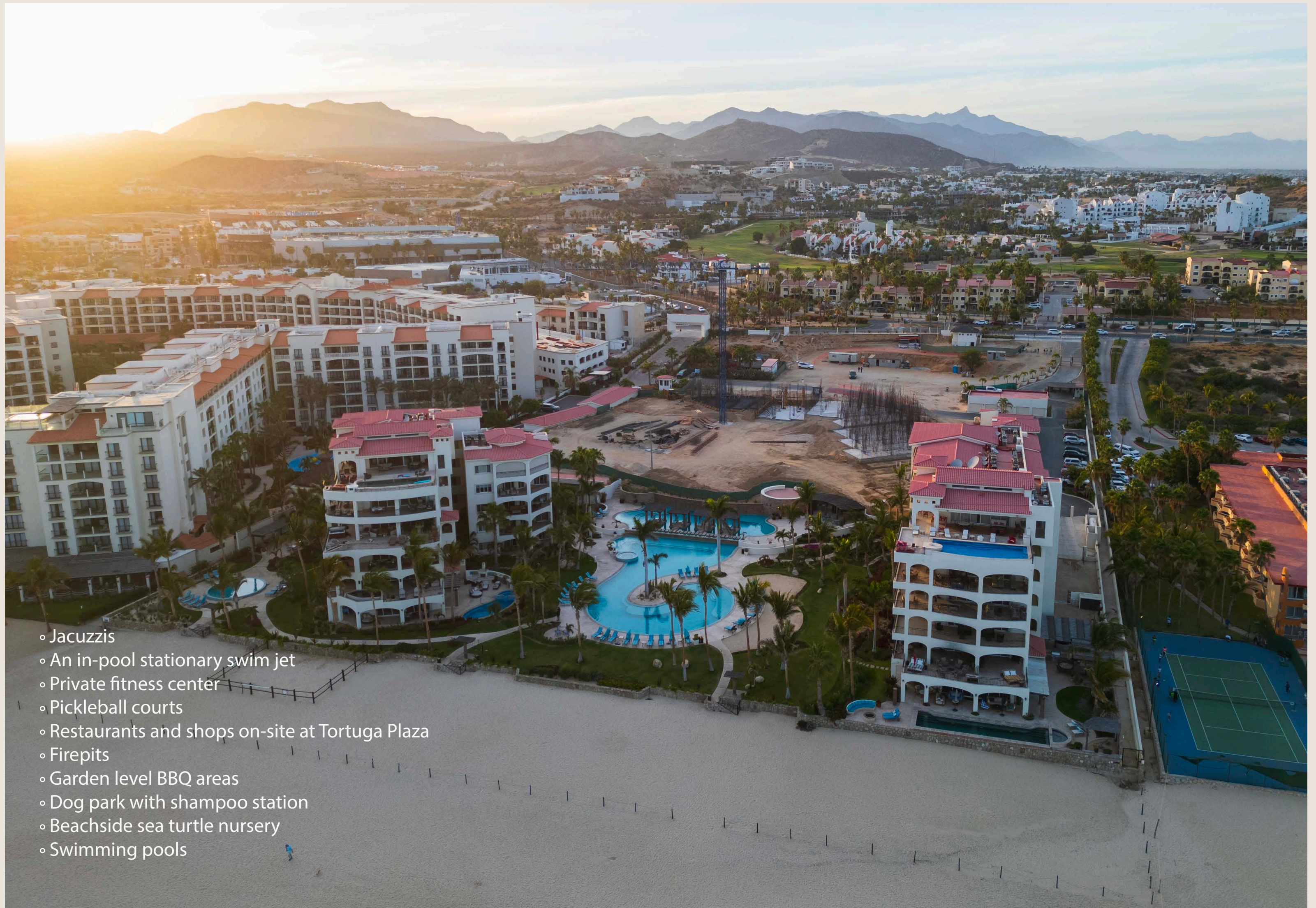
PRICES ARE IN U.S. DOLLARS AND ARE SUBJECT TO CHANGE WITHOUT NOTICE

CONNECTIVITY

- 12 restaurants and three commercial plazas with supermarkets, banks, pharmacies, and coffee shops within a three-block radius.
- One mile from the vibrant lifestyle and gracious colonial charm of downtown San Jose del Cabo.
- Two miles from the world class marina Puerto Los Cabos.
- 20 minutes from the airport. "Drive straight to the beach, do not make a turn, you will arrive at Tortuga Bay."
- 18-hole Jack Nicklaus Golf course ½-mile away.
- Miles of sandy beach at your doorstep. Take a daily stroll, swim, surf, catch a fish.

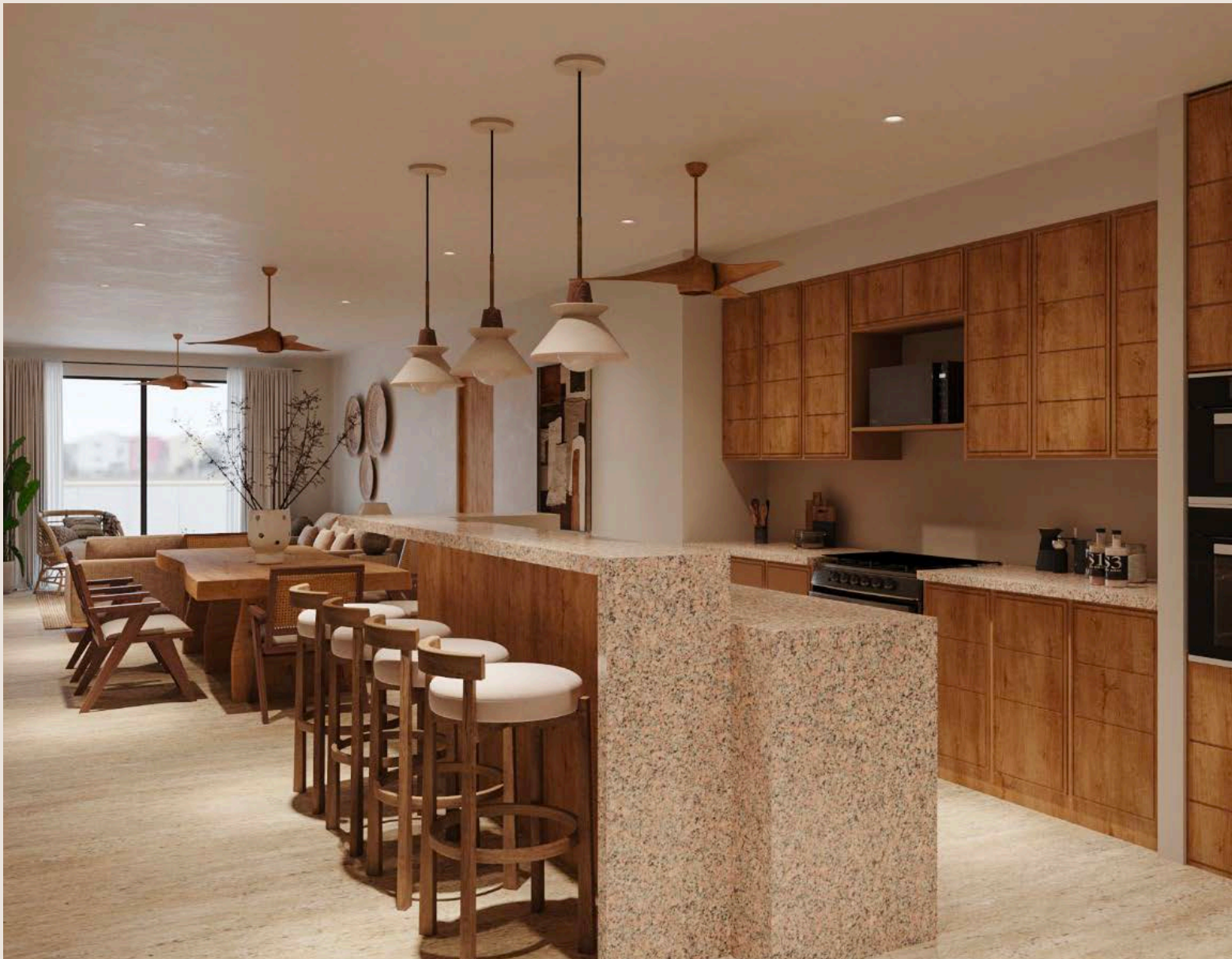


AMENITIES



- Jacuzzis
- An in-pool stationary swim jet
- Private fitness center
- Pickleball courts
- Restaurants and shops on-site at Tortuga Plaza
- Firepits
- Garden level BBQ areas
- Dog park with shampoo station
- Beachside sea turtle nursery
- Swimming pools

SPECIFICATIONS



KITCHEN

Kitchen granite countertops.
Kitchen sink "Sterling by Kohler".
Whirlpool 1/2 hp garbage disposal in the sink.

APPLIANCES

Kitchen equipped with stainless steel appliances.
GE profile brand 25 C.F. Side by side refrigerator.
GE profile electric stove and oven.
Microwave with exhaust integrated above stove.
Whirlpool brand dishwasher.
Whirlpool brand stacked washer and dryer.

BATHROOM

Walls with marble tile.

CARPENTRY

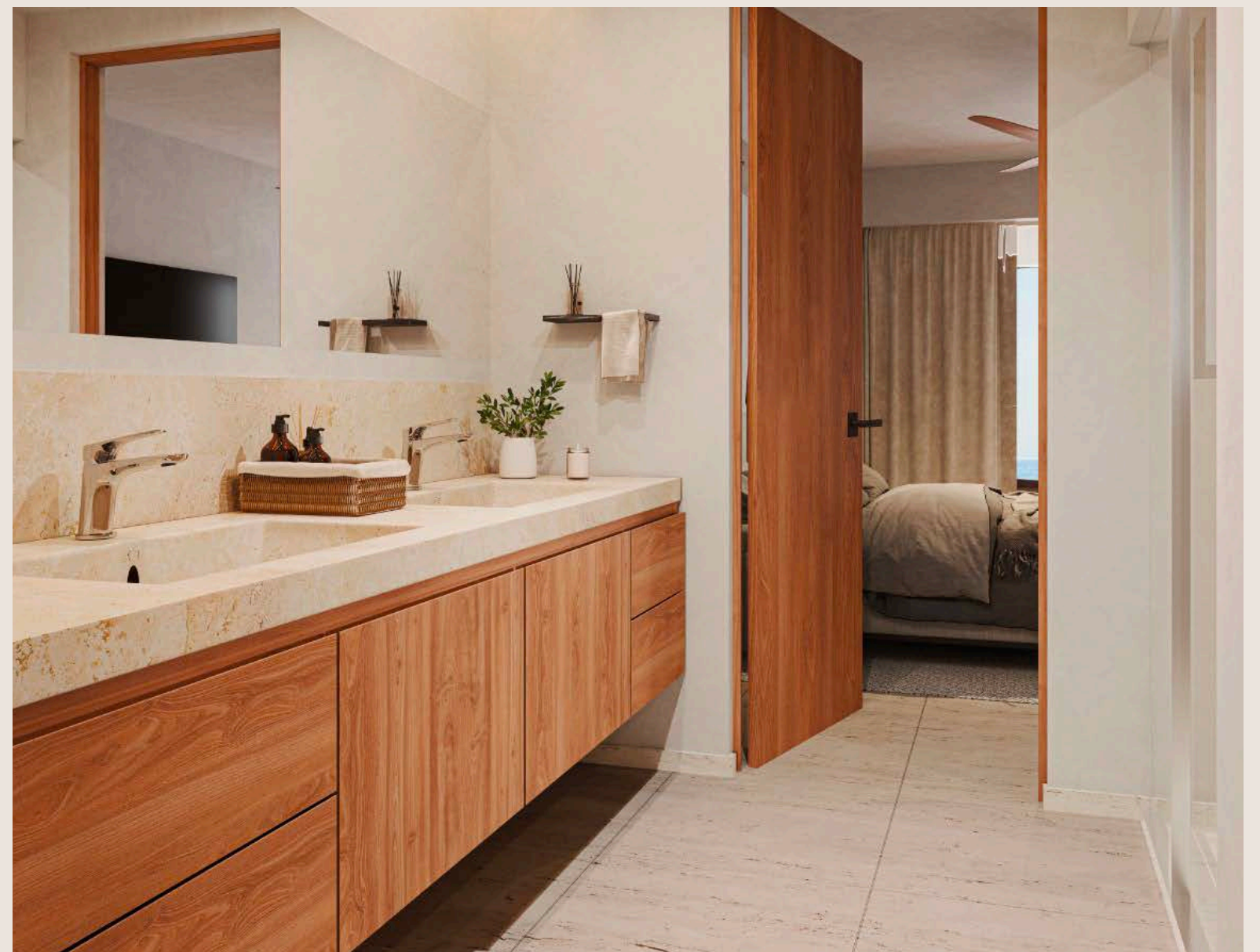
Cabinets fronts with Alderwood.
Communication doors in solid Alderwood.

PLUMBING

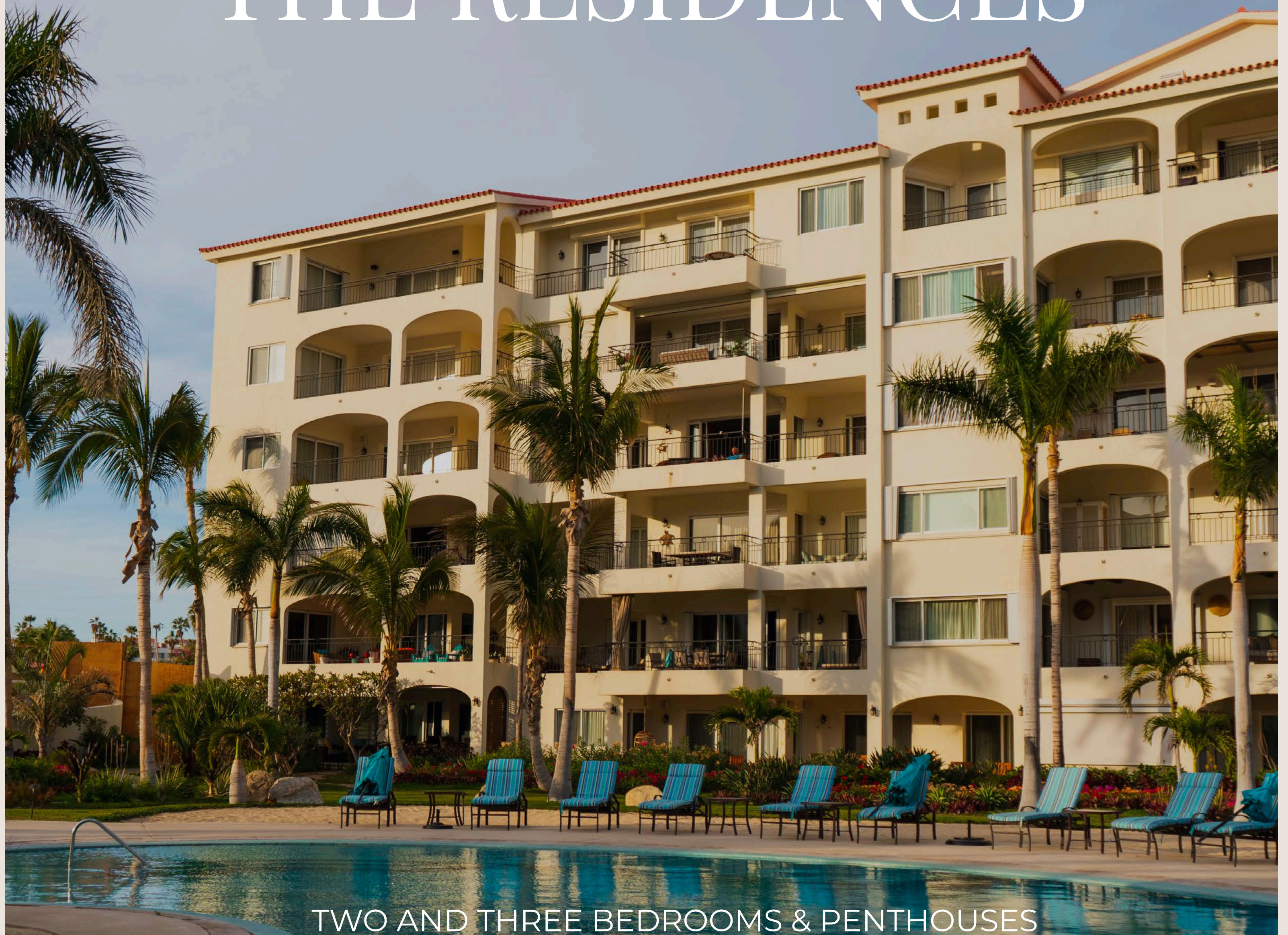
Kohler brand toilets.
Essen brand bathroom faucets.
40 gallon water heater.

AIR CONDITIONING

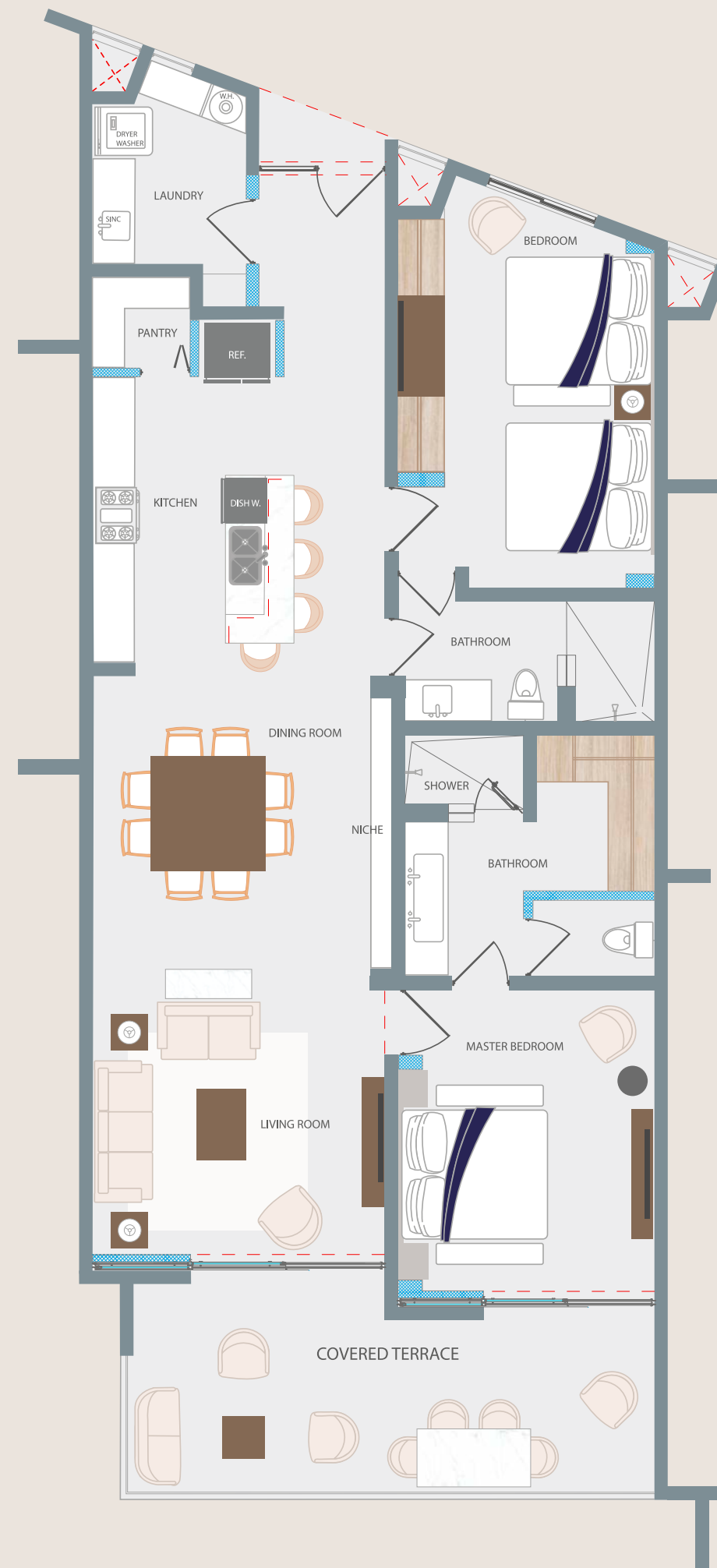
Air conditioning system, fan & coil
"Trane brand type".
Ceiling fans in all rooms.



THE RESIDENCES



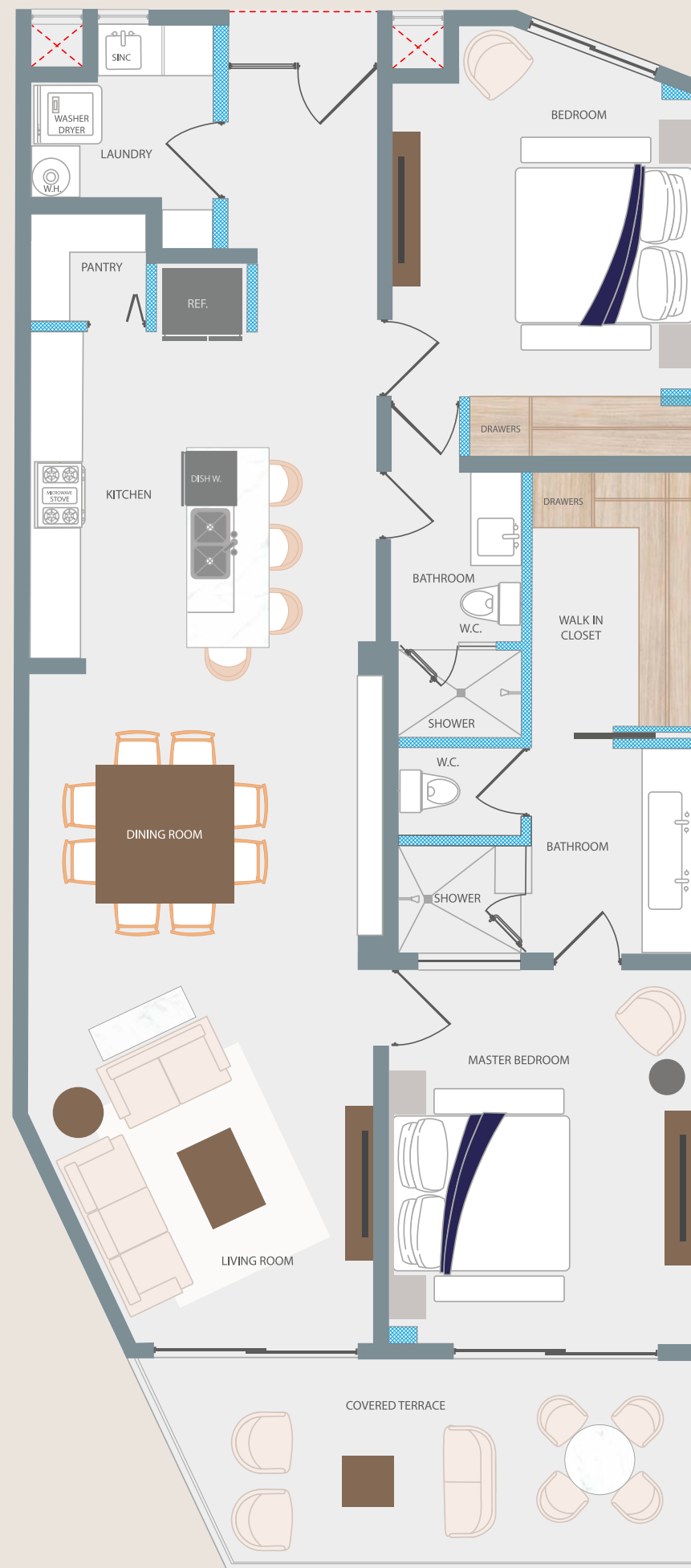
TWO AND THREE BEDROOMS & PENTHOUSES



INTERIOR AREA
ÁREA INTERIOR
1,393.07 ft²

COVERED TERRACE
TERRAZA CUBIERTA
222.17 ft²

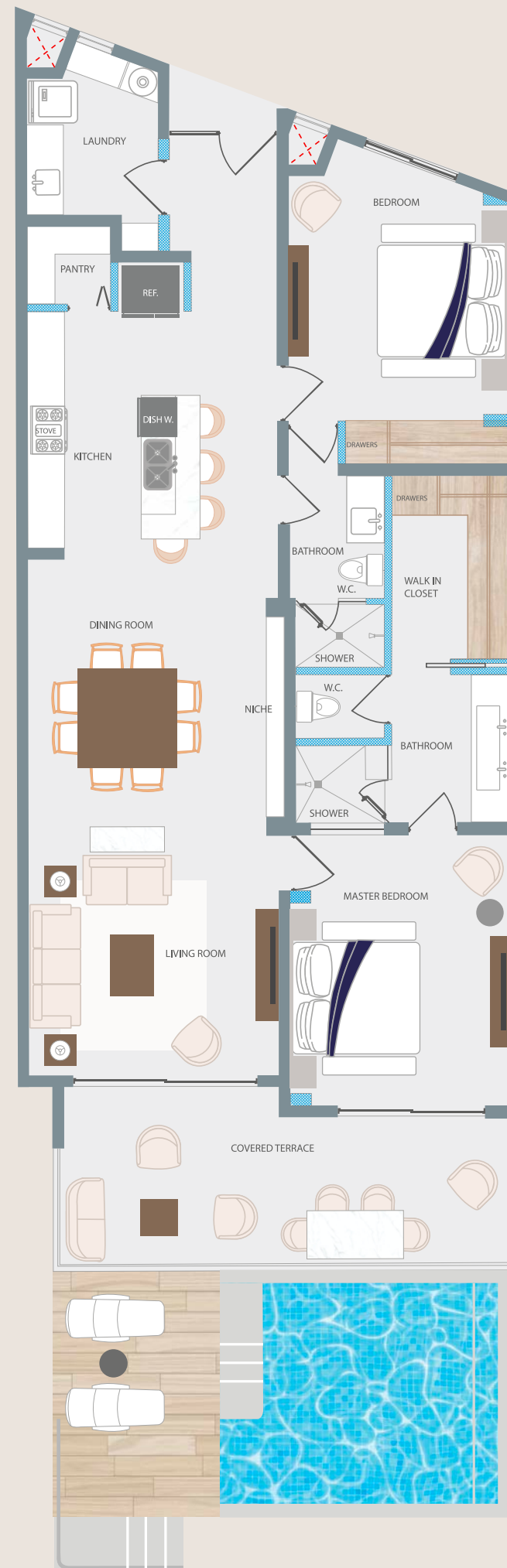
TOTAL AREA
ÁREA TOTAL
1,615.24 ft²



SQUARE FEET
PIES CUADRADOS
1,507.70 ft²

INTERIOR AREA
ÁREA INTERIOR
1,342.47 ft²

COVERED TERRACE
TERRAZA CUBIERTA
165.23 ft²



SQUARE FEET
PIES CUADRADOS
1,952.14 ft2

INTERIOR AREA
ÁREA INTERIOR
1,410.07 ft2

COVERED TERRACE
TERRAZA CUBIERTA
222.17 ft2

SWIM UP
319.90 ft2



SQUARE FEET
PIES CUADRADOS
2,377.31 ft²

INTERIOR AREA
ÁREA INTERIOR
1,410.07 ft²

COVERED TERRACE
TERRAZA CUBIERTA
780.06 ft²

UNCOVERED TERRACE
TERRAZA DESCUBIERTA
187.18 ft²



SQUARE FEET
PIES CUADRADOS
3,840.24 ft²

INTERIOR AREA
ÁREA INTERIOR
2,924.77 ft²

COVERED TERRACE
TERRAZA CUBIERTA
822.69 ft²

POOL
ALBERCA
92.78 ft²



SQUARE FEET
PIES CUADRADOS
2,442.23 ft²

INTERIOR AREA
ÁREA INTERIOR
2,024.91 ft²

COVERED TERRACE
TERRAZA CUBIERTA
417.32 ft²

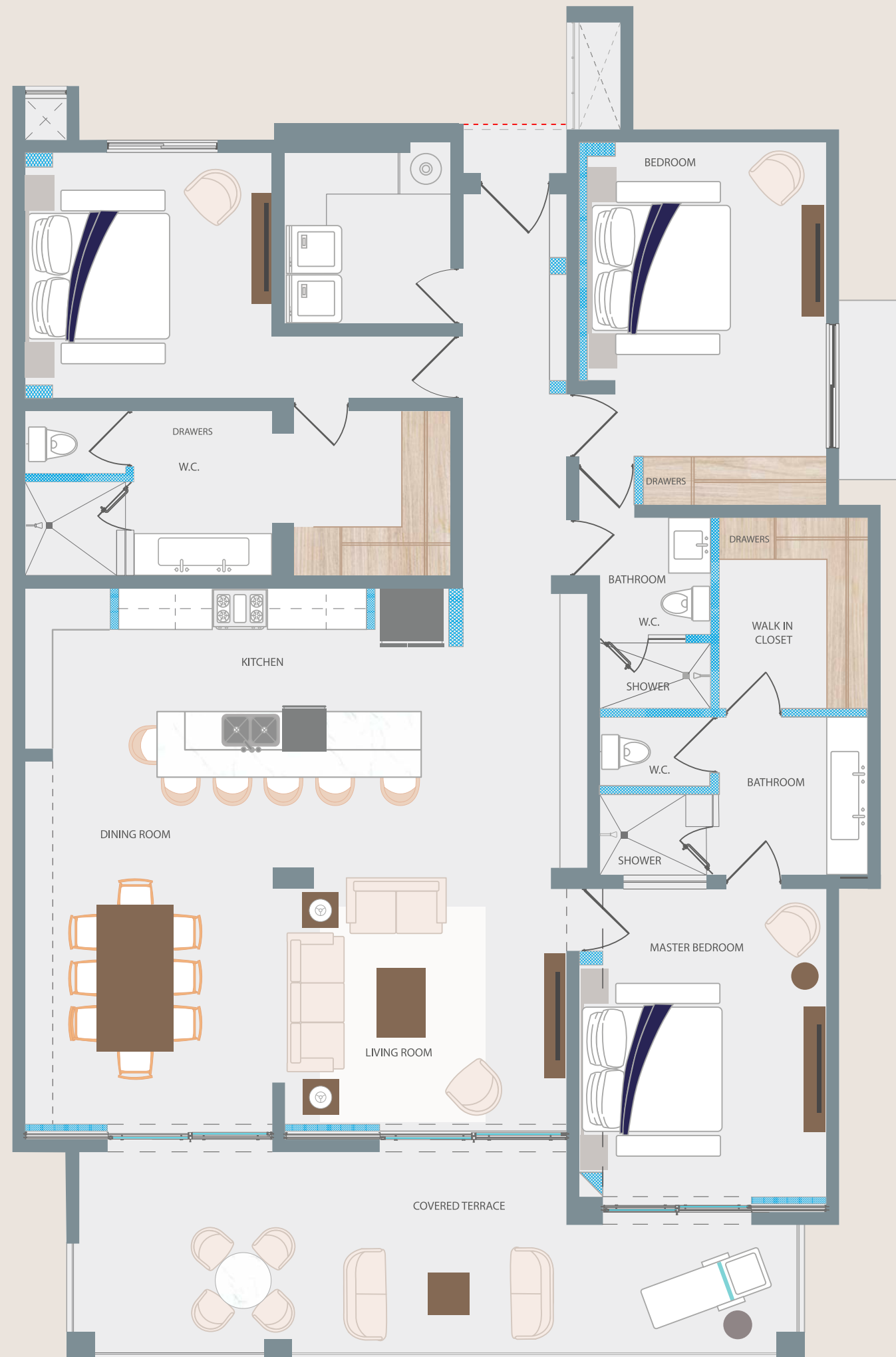


SQUARE FEET
PIES CUADRADOS
2,442.23 ft²

INTERIOR AREA
ÁREA INTERIOR
2,024.91 ft²

COVERED TERRACE
TERRAZA CUBIERTA
417.32 ft²

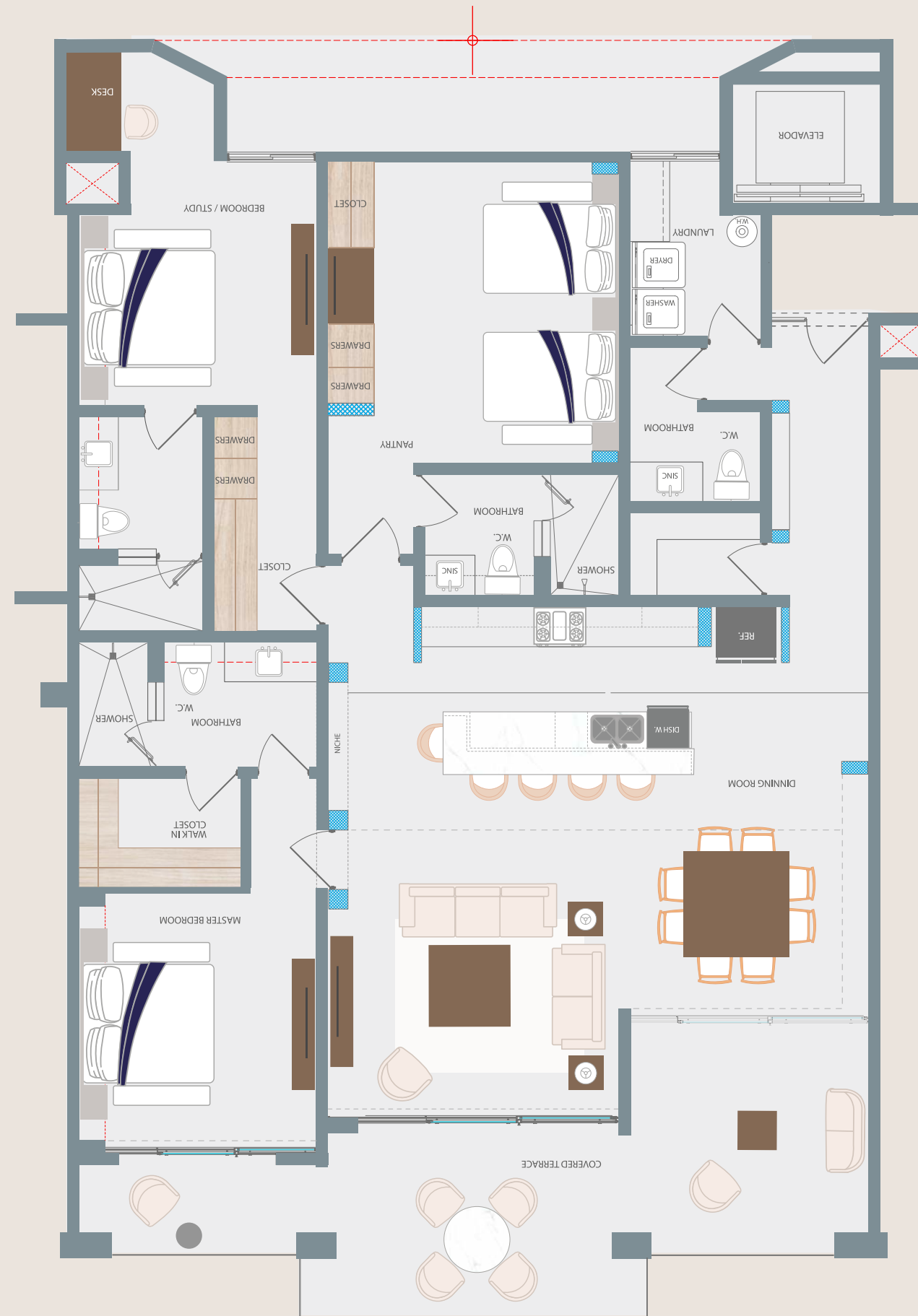
SWIM UP
282.23 ft²



SQUARE FEET
PIES CUADRADOS
2,290.02 ft²

INTERIOR AREA
ÁREA INTERIOR
1,955.37 ft²

COVERED TERRACE
TERRAZA CUBIERTA
334.65 ft²



INTERIOR AREA
ÁREA INTERIOR
1,924.80 ft²

COVERED TERRACE
TERRAZA CUBIERTA
348.32 ft²

TOTAL AREA
ÁREA TOTAL
2,273.12 ft²



INTERIOR AREA
ÁREA INTERIOR

2,038.46 ft²
189.38 M²

GARDEN
JARDÍN

623.05 ft²
57.88 M²

COVERED TERRACE
TERRAZA CUBIERTA

340.89 ft²
31.67 M²

GARAGE
COCHERA

456.60 ft²
42.42 M²

SWIMP UP

315.17 ft²
29.28 M²

TOTAL AREA
ÁREA TOTAL

3,764.7 ft²
349.75 M²

MORE RENDERINGS



COMMON AREAS

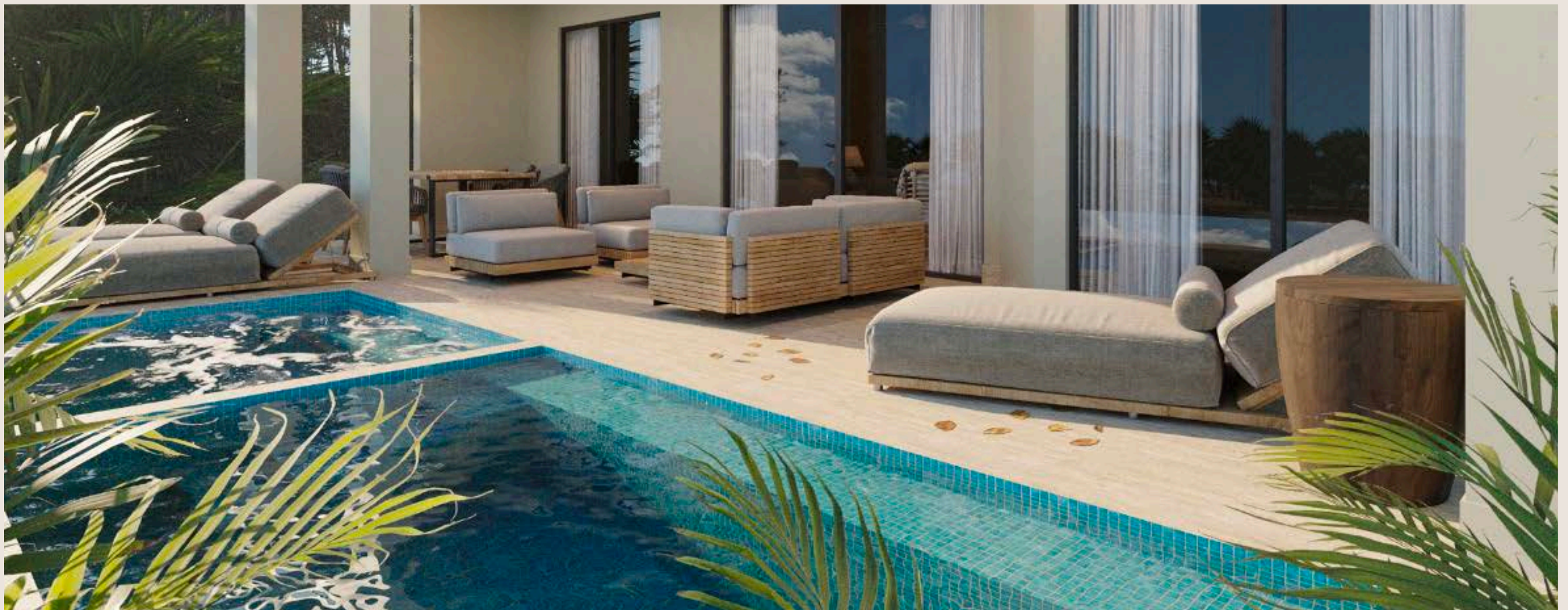


FITNESS CENTER



PICKLEBALL COURT

GARDEN POOL



PENTHOUSE ROOFTOP



INTERIORS





TORTUGA BAY

BEACHFRONT LIVING

CLICK TO DOWNLOAD

PURCHASE ORDER



INTERIOR AREA
ÁREA INTERIOR
2,175.4 ft²

COVERED TERRACE
TERRAZA CUBIERTA
261.24 ft²

ROOF TOP

SQUARE FEET
PIES CUADRADOS
644.75 ft²

UNCOVERED TERRACE
TERRAZA DESCUBIERTA
372.97 ft²

TOTAL

SQUARE FEET
PIES CUADRADOS
3,454.36 ft²



SQUARE FEET
PIES CUADRADOS
2,436.64 ft2

INTERIOR AREA
ÁREA INTERIOR
2,175.40 ft2

COVERED TERRACE
TERRAZA CUBIERTA
261.24 ft2



PH-6A

INTERIOR AREA
ÁREA INTERIOR
2,345.9 ft²

COVERED TERRACE
TERRAZA CUBIERTA
356.18 ft²

ROOF TOP

SQUARE FEET
PIES CUADRADOS
560.69 ft²

UNCOVERED TERRACE
TERRAZA DESCUBIERTA
518.60 ft²

TOTAL

SQUARE FEET
PIES CUADRADOS
3,781.37 ft²



PH-6B

INTERIOR AREA
ÁREA INTERIOR
2,232.3 ft²

COVERED TERRACE
TERRAZA CUBIERTA
345.95 ft²

ROOF TOP

SQUARE FEET
PIES CUADRADOS
544.12 ft²

UNCOVERED TERRACE
TERRAZA DESCUBIERTA
491.26 ft²

TOTAL

SQUARE FEET
PIES CUADRADOS
3,613.63 ft²